

# Puget Sound Anglers- Bellingham

January 20, 2022

Mark Baltzell

Statewide Salmon and Steelhead Manager



# MA-7 Recreational Salmon Fisheries

- 2021 Season – Why only 7 days?
- Why have recreational salmon fisheries been reduced in Area 7 in recent years?
- What can we do different to avoid a repeat of 2021?



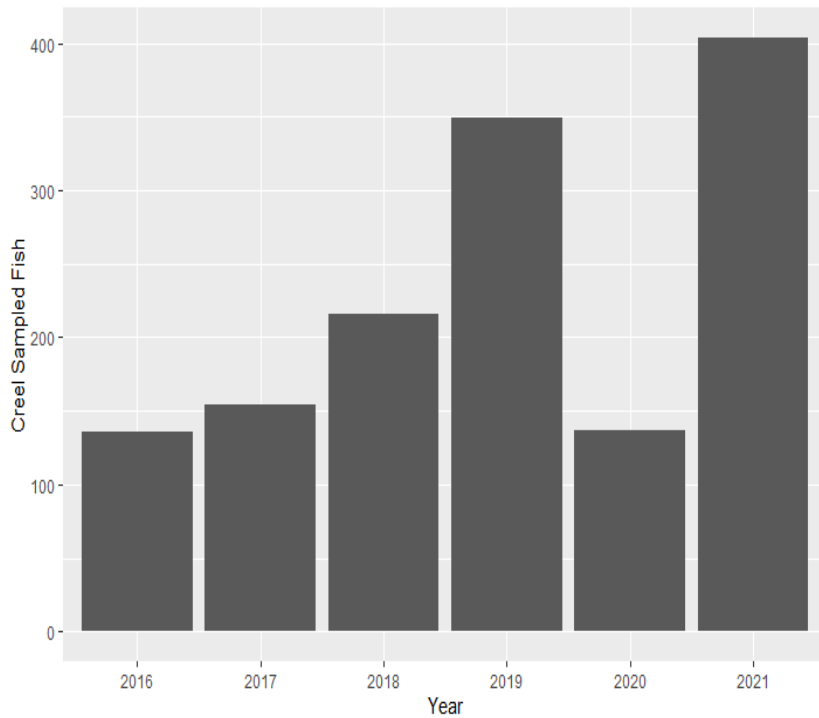
# Area 7 – 2021 Management Triggers

	FRAM Model Prediction	Estimates	Percentage of Total
Harvest Quota (Landed Catch)	1,382	2,550	<b>185%</b>
Total Unmarked Encounters	2,466	1,274	52%
Total Sublegal Encounters	1,899	983	52%

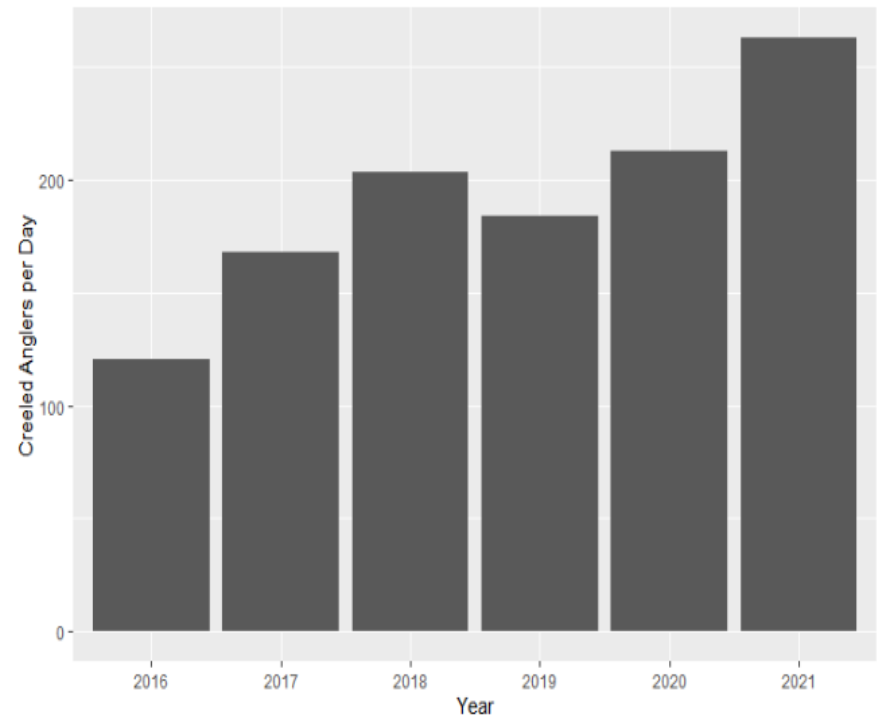


# 2021 MA-7 Effort

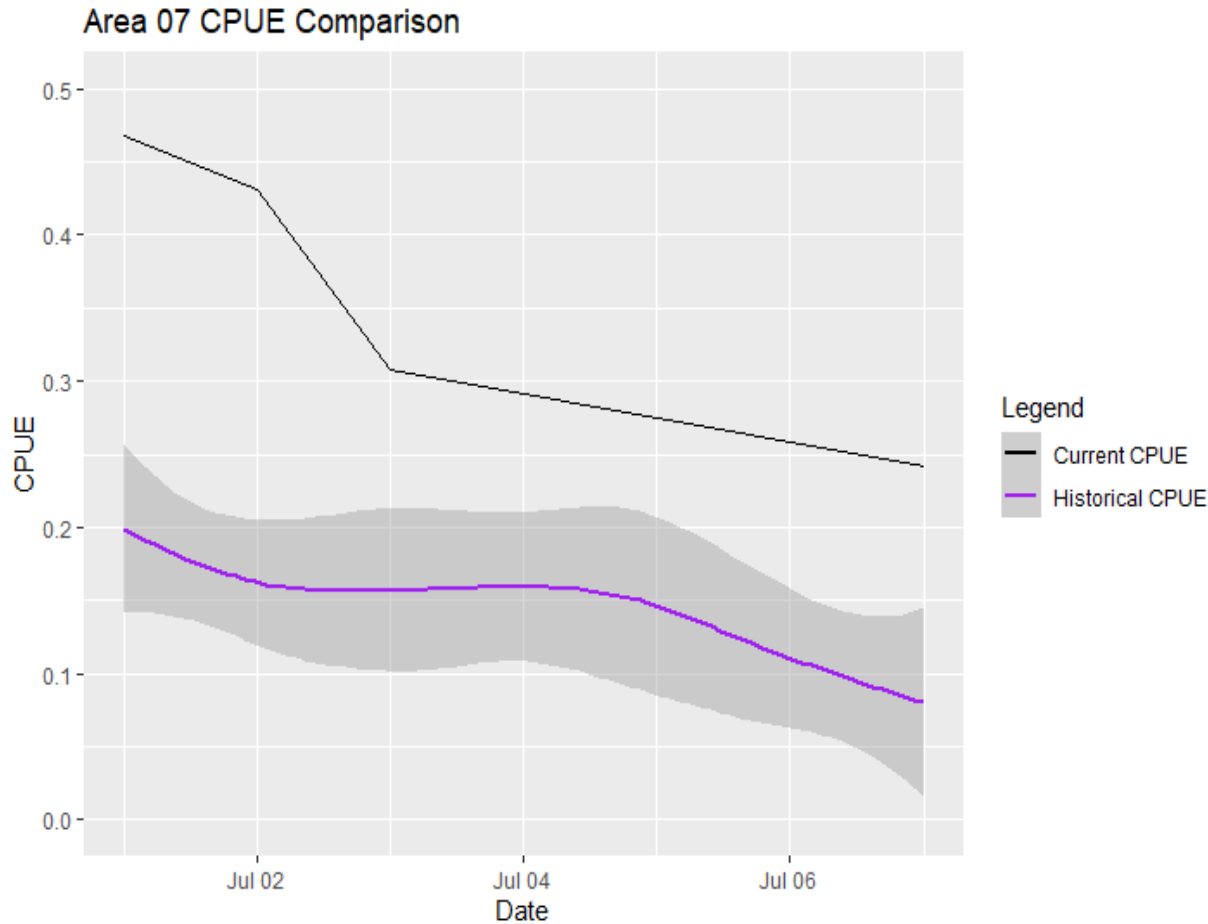
Chinook Sampled during July 1-7



Angler Effort for July 1-7



# 2021 MA-7 CPUE



- CPUE higher in 2021 than historical average
- This trend has been seen other areas



# Stillaguamish Impacts – MA-7

- Total overage in catch quota limited other non-directed opportunities
- Commercial fisheries directed at Pink and Sockeye have little or no modeled impact to contribute.

Stillaguamish Impacts in the MA-7 Sport Fishery July-September, 2021		
MARKED		
Preseason Model		Preseason Model with 2021 MA-7 Catch
MSF Landed	8.42	15.68
MSF Drop Off	0.48	0.90
MSF Sublegal	1.21	0.73
MSF Non-Retention	0.13	0.23
Total MSF	<b>10.24</b>	<b>17.54</b>
Non-Selective, Non-Retention	<b>1.02</b>	<b>1.60</b>
UNMARKED		
Preseason Model		Preseason Model with 2021 MA-7 Catch
MSF Landed	0.04	0.00
MSF Drop Off	0.22	0.09
MSF Sublegal	0.55	0.07
MSF Non-Retention	0.43	0.17
Total MSF	<b>1.24</b>	<b>0.33</b>
Non-Selective, Non-Retention	<b>0.46</b>	<b>0.15</b>



# Management History

- Prior to 2017, constraining stocks for PS Chinook:
  - Mid-Hood Canal
  - Lake Washington
  - Puyallup, Skokomish, Nisqually (occasionally)
- 2017 – Comanagers assessed the status of the stocks
  - Determined that Stillaguamish Chinook was in a declining population status
- 2016-17 Management Model (FRAM) updated with contemporary base period of years (2007-13)



# Stillaguamish Chinook Management Objectives

- Pre-2017 objective using the old FRAM base period was 15% SUS CERC or 25% total ERC
- 2017 – objectives were adjusted:

Stillaguamish	Forecasted Total UM		SUS UM ERC	SUS M ERC
	TRS	ERC		
MU	900	22.0%	8.0%	12.0%
	1,000	22.0%	8.0%	12.2%
	1,100	22.0%	8.0%	12.4%
	1,200	22.0%	10.0%	14.8%
	1,300	22.0%	11.0%	16.2%
	1,400	22.0%	12.0%	17.6%
	1,500	22.0%	13.0%	NA

TRS= Terminal Run Size

UM = Unmarked (Natural)

ERC = Exploitation Rate Ceiling

M = Marked (Hat)

SUS=Southern US (South of Canadian boarder including Ocean fisheries)





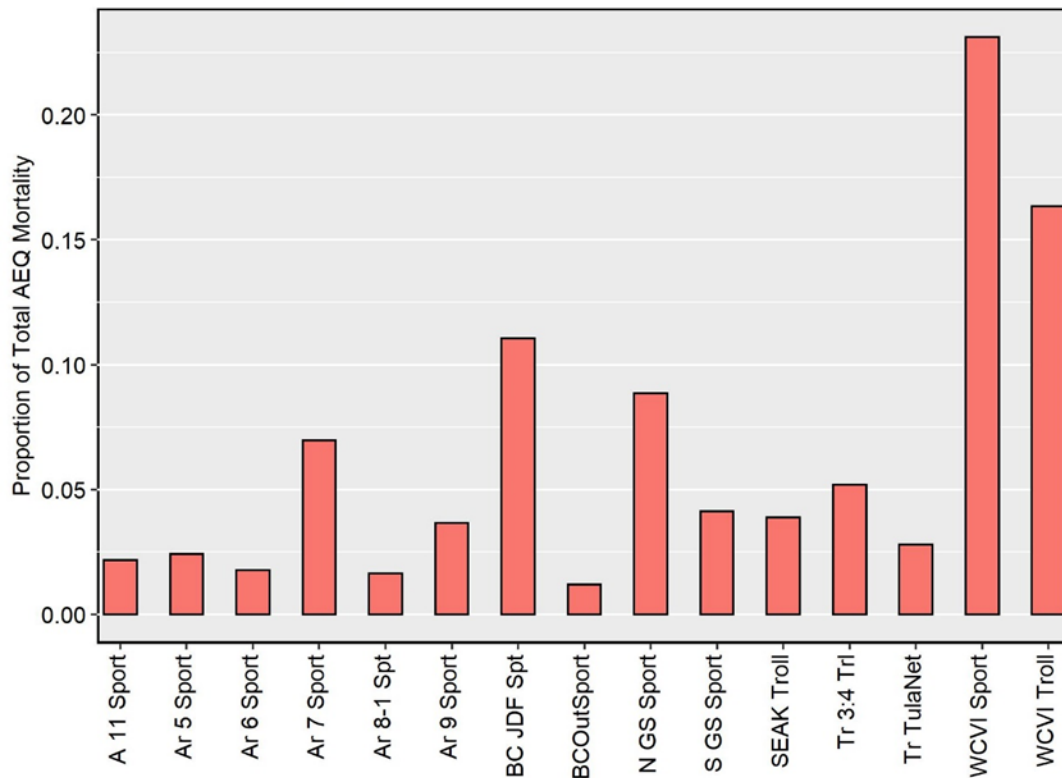
# Stillaguamish Status

- In the past 3 pre-seasons, Stillaguamish has been in a poor abundance status (between 900 and 1000, e.g., just above the LBT).
  - This causes the objective to be 8.0% SUS – a considerable reduction to the objective relative to the pre-2017 objective.
- Historically, when Mid HC and Lake WA were the most constraining stocks, Area 7 was not highlighted as an area of particular concern.
  - While impacts did exist in Area 7 for both stocks, impacts were fairly spread out across many marine areas.



# Stillaguamish Impacts

9 - Stil FF; Total



- Stillaguamish impacts differ from Mid HC and Lake WA as the impacts are greatest in MA 7 relative to other sport areas
- Therefore, modifications to the Area 7 season have been necessary to meet conservation objectives for Stillaguamish.



# MA-7 Alternative Management Strategies

- Later season opening
  - Mid-August – September
  - MSF or NR for Chinook
- Avoid season openings adjacent to the Fourth of July weekend
  - Recent history indicates the highest CPUE and effort associated with the first week of July



# Alternative strategies (cont.)

- Reduced day openings
  - Weekends only
  - Sunday – Thursday
  - Goal would be to reduce effort and extend the total season length
  - Allows for WDFW to analyze data and assess season progress.



# Future of MA-7

- Stillaguamish likely to remain constraining for at least near future
- SRKW concerns will likely continue
- Priority?
  - Time on the water?
  - Chinook directed fisheries?
- Thoughts?



# Questions/Comments?

